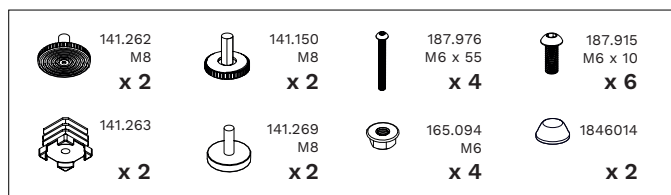
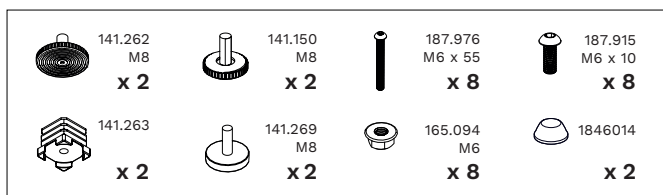


P. 420

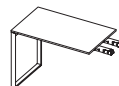


P. 600

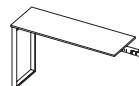


Allungo appeso / Hanging return top / Retour suspendu

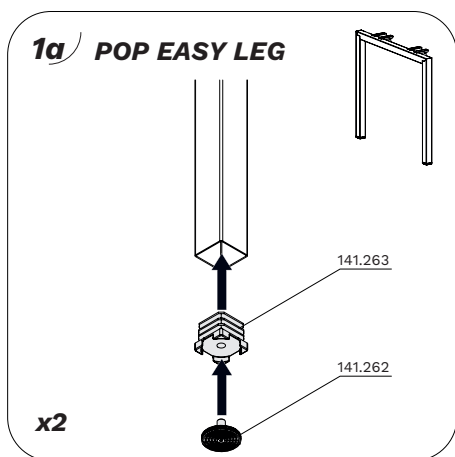
P 420 (02-06)



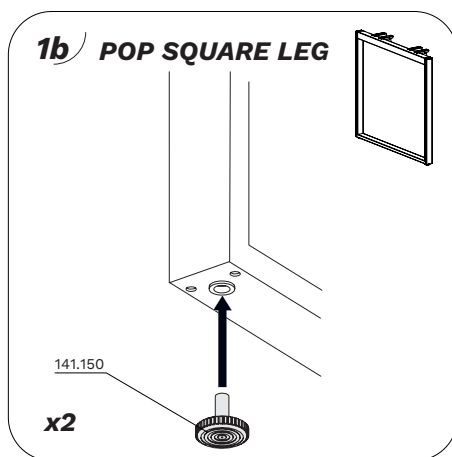
P 600 (07-11)



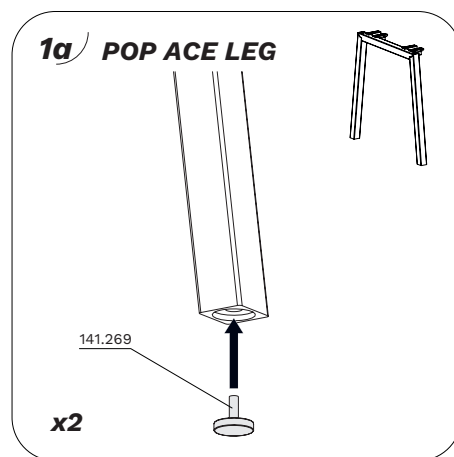
1a) POP EASY LEG



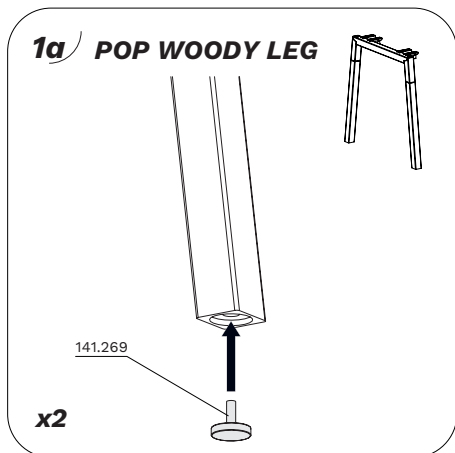
1b) POP SQUARE LEG



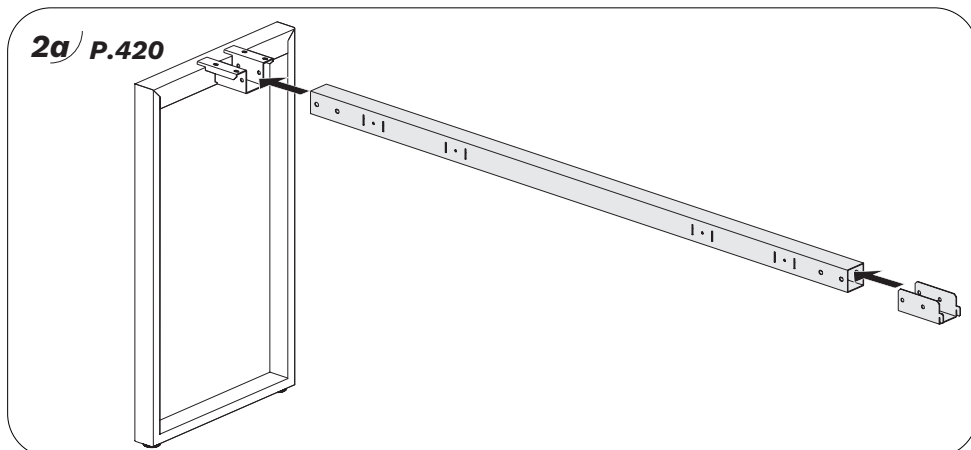
1a) POP ACE LEG



1a) POP WOODY LEG

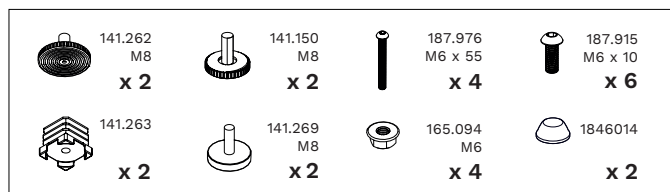


2a) P.420

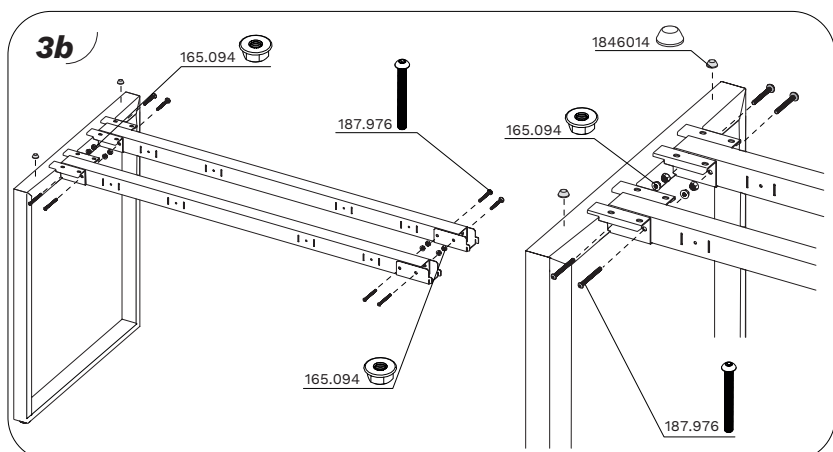
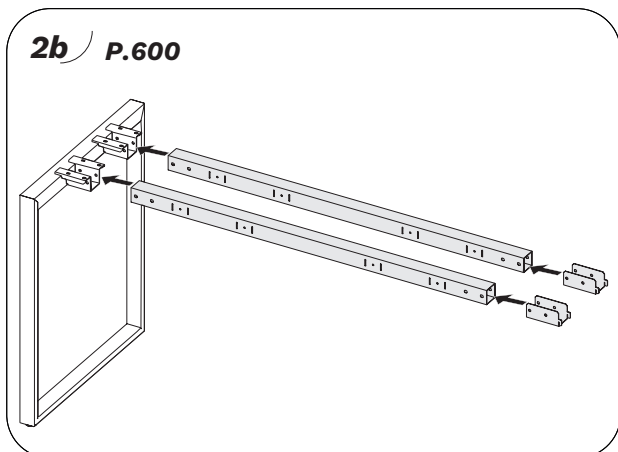
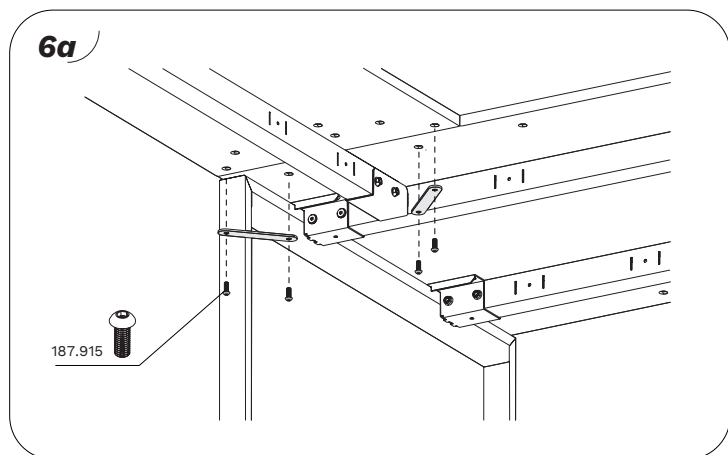
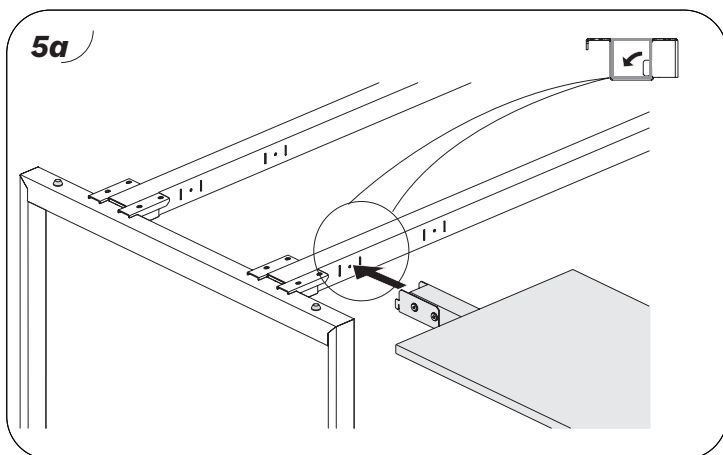
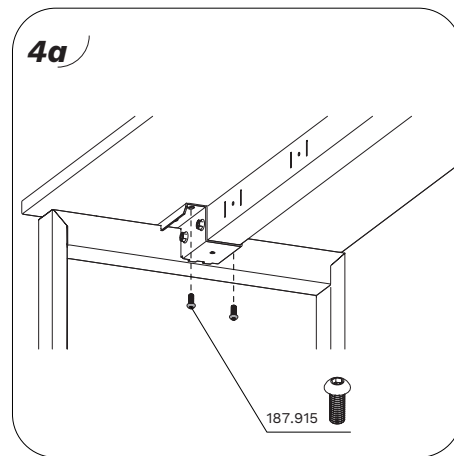
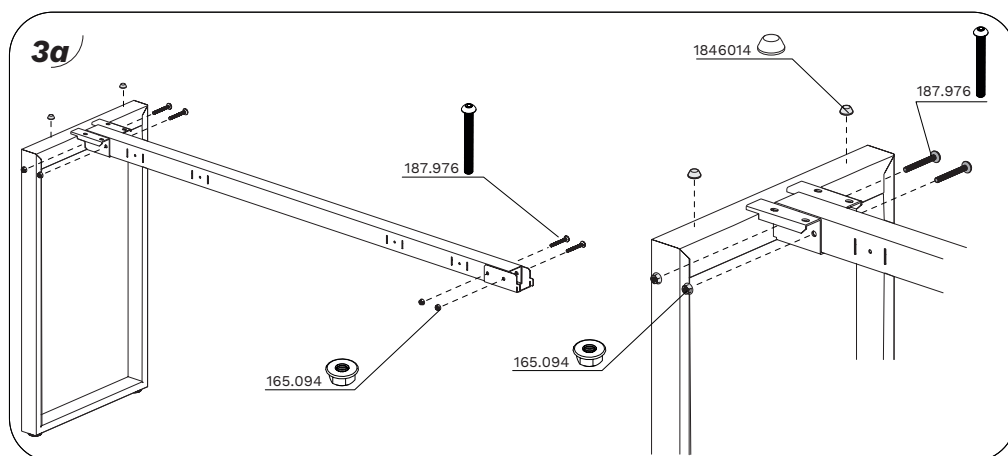
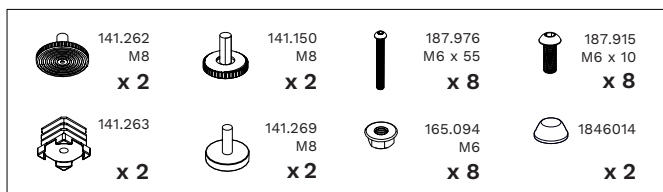


SCHEMA DI MONTAGGIO / DISASSEMBLAGGIO — ASSEMBLY / DISASSEMBLY INSTRUCTIONS — NOTICE DE MONTAGE / DÉMONTAGE

P. 420

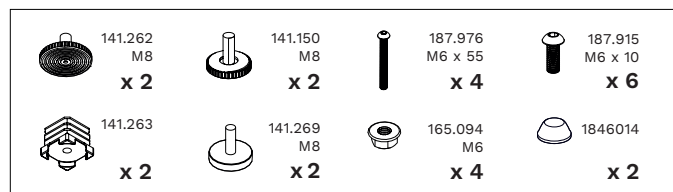


P. 600

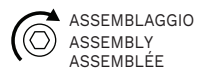
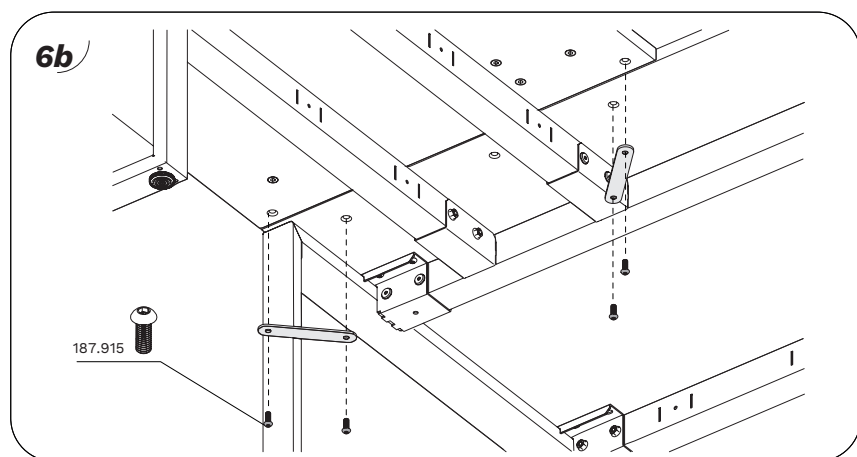
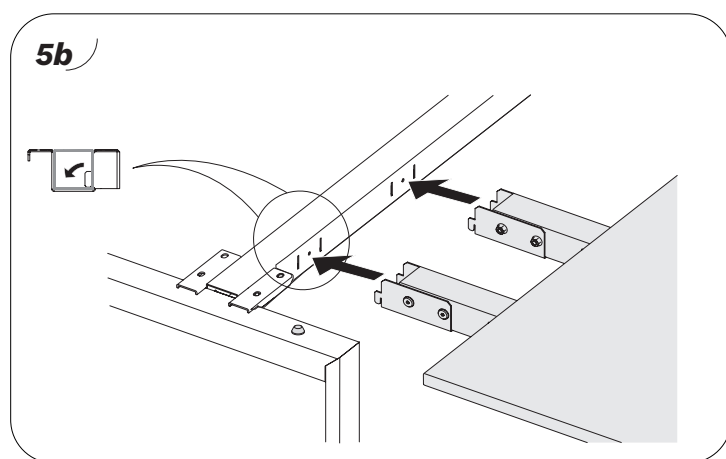
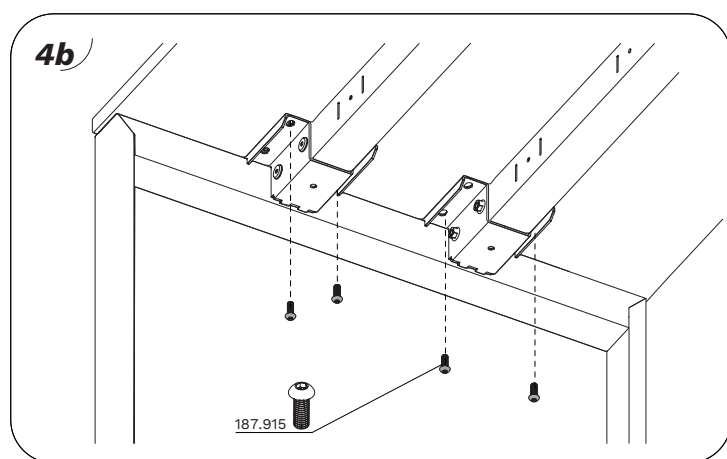
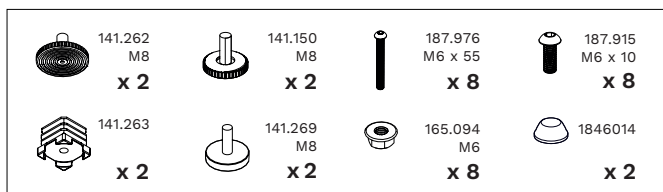


SCHEMA DI MONTAGGIO / DISASSEMBLAGGIO — ASSEMBLY / DISASSEMBLY INSTRUCTIONS — NOTICE DE MONTAGE / DÉMONTAGE

P. 420



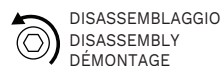
P. 600



ASSEMBLAGGIO
ASSEMBLY
ASSEMBLÉE

-Per disassemblare il prodotto seguire le istruzioni di assemblaggio a ritroso, invertendo il senso delle frecce.

-To disassemble the product, please follow the assembly instructions in the opposite order, reversing the arrows' direction.



DISASSEMBLAGGIO
DISASSEMBLY
DÉMONTAGE

-Pour démonter le produit, suivez les instructions de montage en sens inverse, en inversant le sens des flèches.